

acmax

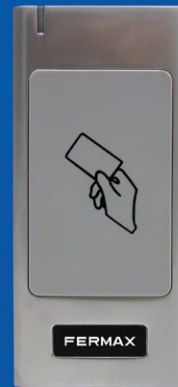
FERMAX ACCESS CONTROL SYSTEM



THE MOST
COMPETITIVE IP
ACCESS CONTROL
SYSTEM

acmax

FERMAX ACCESS CONTROL SYSTEM



AC-MAX is a centralised access control system that uses advanced functions while also being simple to integrate. It is perfect for medium-sized projects.

The system allows you to comprehensively manage multiple access points distributed across various sites.

The system connects the different readers with IP controllers, using an intuitive software that allows to manage fingerprints.

Free software
Available and updated at
www.fermax.com

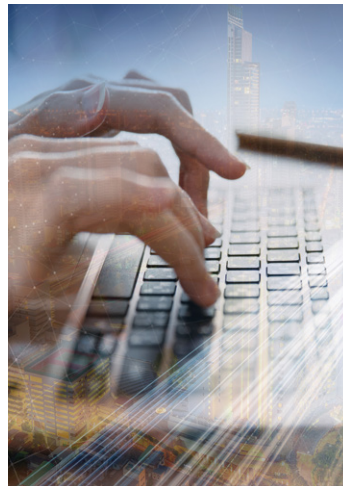


advantages

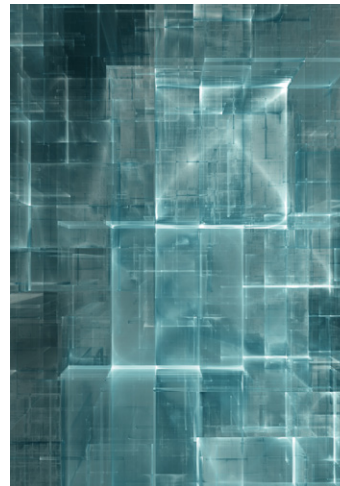
FERMAX



Easy to install and competitive kit format



Assistant that guides the installer through the process of creating their own configuration



Visual management of accesses via IP network with site map



Integrated fingerprint readers which are managed using the same software



Allows events to be registered in customisable formats

types of projects

RESIDENTIAL PROJECT



OFFICES



INDUSTRIES



PARKING



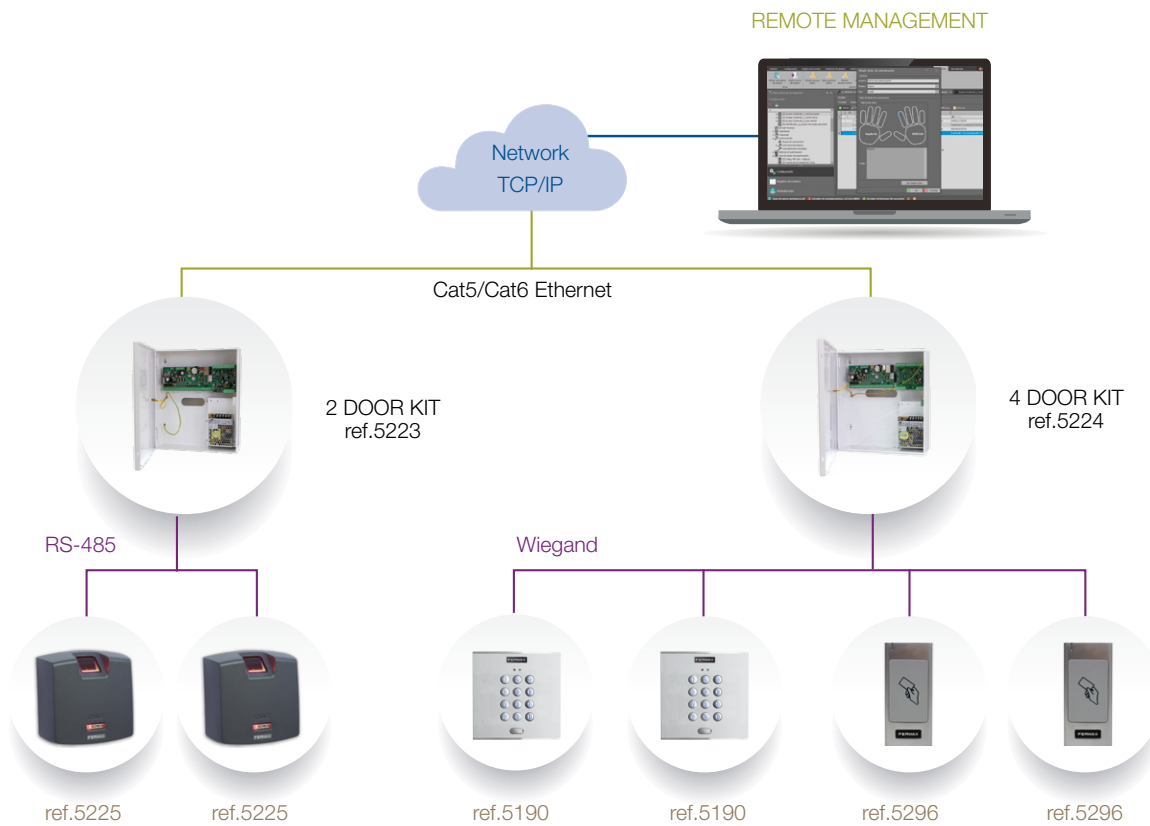
GYM



STORES



installation



The system is based on IP controller units which can be installed at various network points in the same facility, with one controller unit per every two or four doors.

When the doors to be secured are in different buildings, or if there is a long distance between doors in the same building, more controller units can be added.

The controller units work with both Wiegand readers and AC-MAX fingerprint readers (bus RS-485).

The number of controllers can easily be expanded depending on the needs of each project. They are linked using an ethernet or network point.

Features



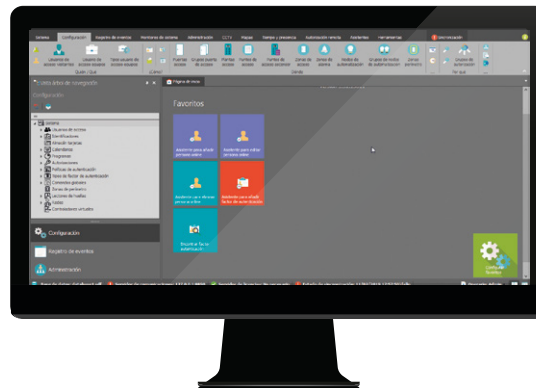
AC-MAX has
2 free softwares

AC-MAX (ST), with all the functions required to cover complex and big projects.

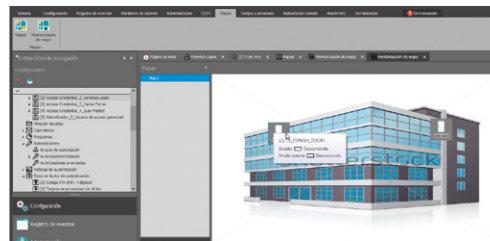
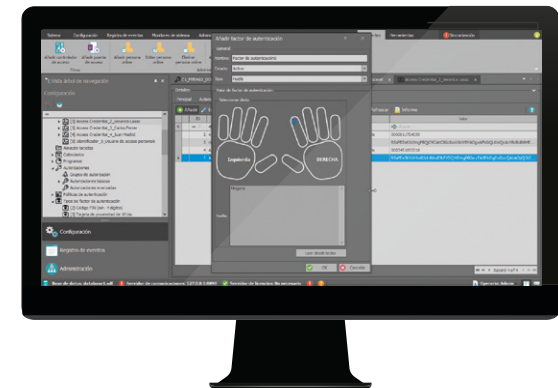
AC-MAX Lite (LT) is a simplified version which is recommended for small or medium projects (up to 20 doors) or medium complexity projects where a real time supervision of the system from a computer is not required.

Languages: Spanish, English, Portuguese, French, German, Dutch.

Configuration wizard for the installer
(ST version)



Fingerprint enrolment integrated
in the software



Site map and online management
(ST version)

SOFTWARE FEATURES



SOFTWARE FEATURES	LT 2.0	ST 2.0
CAPACITY		
Licenses required	NO	NO
No. of doors	no limit	no limit
No. of users/central	8.192	8.192
No. of central units	no limit	no limit
No. of relays	no limits/ 128 per controller	no limits/ 128 per controller
No. of sensors	no limits/ 128 per controller	no limits/ 128 per controller
No. of events	8.000.000	8.000.000
BASIC FUNCTIONS		
Configuration Wizard	NO	YES
Real time event monitoring	YES	YES
Reports	YES	YES
Built-in fingerprint enrolment	YES	YES
Site Map	NO	YES
Software remote door opening	YES	YES
Local Antipassback	YES	YES
Different operator profiles	YES	YES
Access Zones	YES	YES
Occupancy limit	YES	YES
Occupancy count	YES	YES
List of persons in a zone	YES	YES
Alarm zones	YES	YES
Automations	YES 8 automations	YES 8 automations
Credential expiry date	YES	YES
Different credentials per user	YES	YES

SOFTWARE FEATURES	LT 2.0	ST 2.0
ADVANCED FUNCTIONS		
Limited number of accesses per user	NO	NO
Global Antipassback	NO	YES
Perimetral zones	NO	YES
Client/Server installation	YES	YES
Multi Company partition	NO	YES, License required
Different projects management	YES	YES
Internet remote management	YES	YES
Time & Attendance	Basic	Basic
Basic visit management	NO	YES
Design/Print prox cards	NO	YES
Advance Authorization	NO	YES
Authentication policies	YES	YES
Asset management	NO	YES
Email alerts	NO	YES
Fire Alarm inputs	NO	YES
INTEGRATION		
External Database	YES	YES
CCTV video stream reception	YES	YES
API	NO	YES, License required
Lift Control	NO	YES, License required

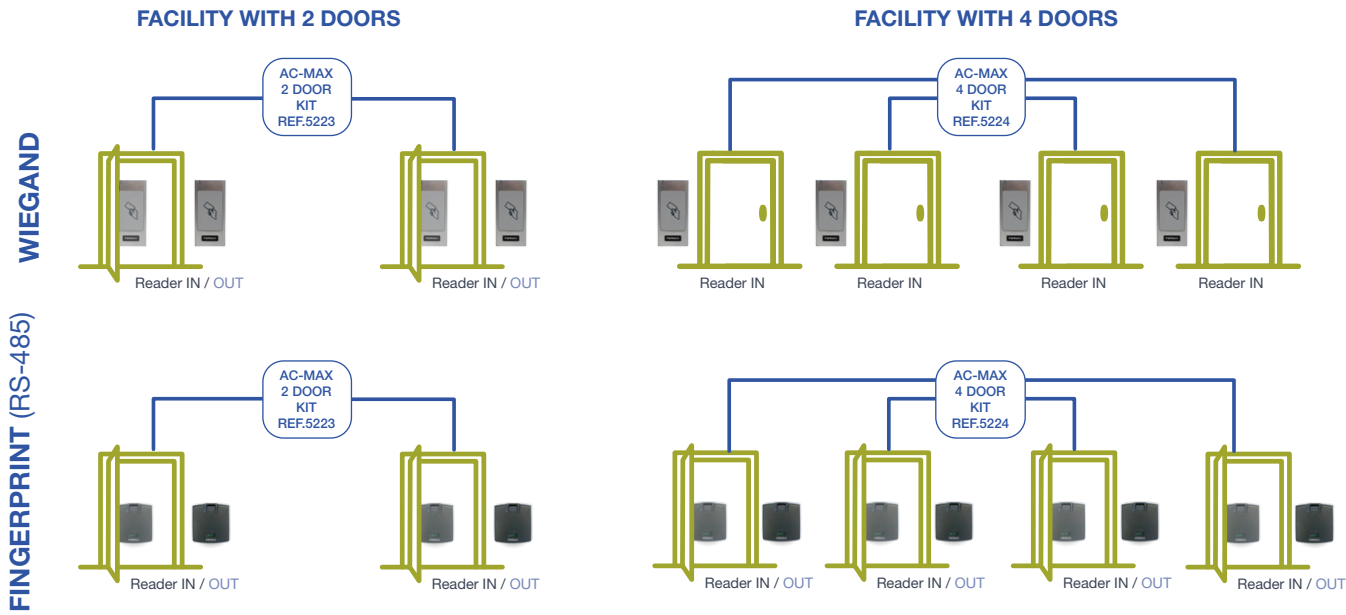
SYSTEM FEATURES

CAPACITY	
System	Centralised
Connectivity between central units	Native IP
Management connection	TCP/IP
Wiegand readers	Prox: City, Marine, Skyline, Resistant Keypad: City, Marine, Skyline, Resistant. RF Receivers.
Fingerprint readers	Registration of users and fingerprints from the same software.
Max. number of users	8.192 / central unit
Number of doors (1 reader per door)	Unlimited
Max. number of networked controllers	Unlimited
Management of central unit events	8.000.000
Relays and sensors	Integrated into main controller card and expander card
Scalable and expandable	Yes
Software	Free Software

	REF.5223 2 DOOR KIT	REF.5224 4 DOOR KIT
No. of Doors	2	4
No. Max. Entry readers	2	4*
No. Max. Exit readers	2	4*

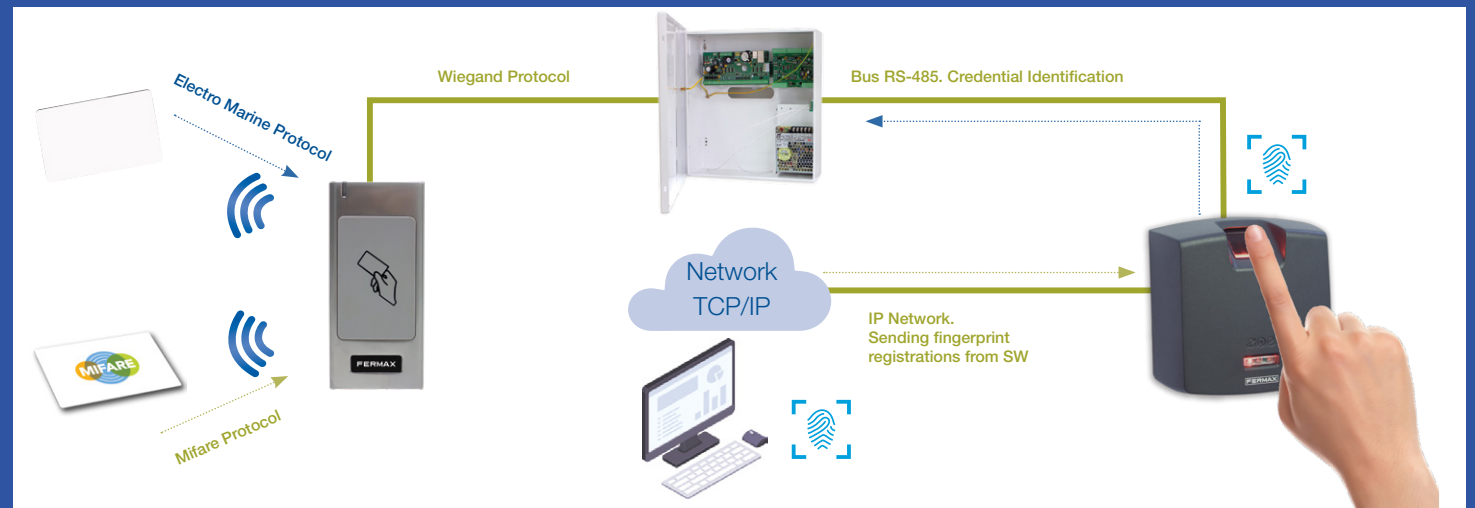
* In the 4 door KIT it is possible to connect up to 4 Wiegand readers or 8 fingerprint readers (4 entry and 4 exit).

configuration



NOTE: The fingerprint reader also needs to be connected to the IP network.

COMMUNICATION PROTOCOLS



devices

REF. 5223 2 DOOR AC-MAX CONTROLLER KIT

Includes metal box with power supply, an IP controller unit and 2 door expander.

Battery capacity:

12Vcc/7A

Dimensions:

295 (H) x 285 (W) x 90 (D) mm

Power supply: 3.5A



REF. 5224 4 DOOR AC-MAX CONTROLLER KIT

Includes metal box with power supply, an IP controller unit and 4 door expander.

Battery capacity:

12Vcc/7A

Dimensions:

325 (H) x 305 (W) x 100 (D) mm

Power supply: 5A



REF. 5225 FPAC-MAX FINGERPRINT READER

The FPAC-MAX is a biometric fingerprint reader equipped with a high-quality optical sensor and an ISO/IEC 14443A and MIFARE® proximity reader. Users are recognised by comparing their fingerprint with the ones that are registered in the reader's memory (1:N mode) or with those that are registered on the MIFARE® card (1:1 mode). The reader can store up to 1.900 fingerprints.

Dimensions: 85 (V) x 85 (H) x 52 (P) mm

IP: 41



For projects with more than 4 doors, just connect additional kits to the same IP Local Area Network. All kits will be managed by the same software on the LAN.

READERS

MIFARE CLASSIC 13.56 MHz

6958 CITYLINE WG MIFARE/EM PROXIMITY READER



ref.6958

7461 SKYLINE WG MIFARE/EM PROXIMITY READER V



ref.7461

5296 RESISTANT PROXIMITY READER

(Also can read EM 125 KHx, HID ISOPROX II and Mifare Classic 13,56MHz).



ref.5296

KEYPADS

5190 WIEGAND CITYLINE KEYPAD

Outdoor/Indoor. Flush box included (ref.8948).
Surface box optional (ref.7061).



ref.5190

5191 WIEGAND SKYLINE KEYPAD W

Accessory for SKYLINE and CITYLINE panels.



ref.5191

5293 RESISTANT KEYPAD W/PROXIMITY

(Also can read EM 125 KHx, Mifare Classic 13,56MHz and HID ISOPROX II).



ref.5293

NOTE: Max. wiring distance to the controller:

- Readers ref.5293, 5296, 6958, 7461: **100m**
- Readers ref.6992, 7440, 5472, 5190, 5191: **10m**

RF RECEIVERS 868 Mhz

5266 RF-WIEGAND RECEIVER 12Vdc

RF receiver with a max reading range up to 100m. Can be interfaced with Wiegand 26 (4 wires from each receiver) to the controller. Dimensions 77x180x30mm.



ref.5266

IDENTIFIERS

MIFARE CLASSIC 13,56 MHz

52740 MIFARE PROXIMITY KEYRING

52750 MIFARE PROXIMITY CARD

RF 868 MHz CONTROLLERS

Compatible with receivers ref.5266.

5259 RF KEYSINGLE-MINI EMITTER 2 PUSH.

5231 RF KEYSINGLE-PLUS EMITTER 2 PUSH.

5232 RF KEYSINGLE-PLUS EMITTER 4 PUSH.



ref.5259



ref.5231

*Proximity and RF Identifiers are not sequential so ID numbers are not correlative.

ACCESSORIES

5201 EXPANDER 8 INPUTS / 8 OUTPUTS (EXP8-IO)

8 input / 8 output expander board. It allows to activate up to 8 relay outputs to automate functions or simultaneous door opening. It allows to detect up to 8 sensor inputs for alarms or door status. The circuit includes DIN rail mounting adapters. It is required an additional DIN rail surface/flush box (not included in the product).



ref.5201

5204 DESKTOP PROXIMITY READER AC-MAX (KEY3-USB)

USB desktop reader that allows the enrolment of new user credentials reading the MIFARE cards directly in the software. Therefore, it is not required to write the printed code on the prox. card. Includes the USB desktop cable and support.



ref.5204

1608 AC-MAX LICENSE DONGLE (KEY6-USB)

Security dongle required to upload integration licenses to the SW. It is required to acquire additional integration licenses based on the number of accesses (ask for more information).

LIFT CONTROL

5222 LIFT CONTROL 8 FLOOR KIT

1 x IP controller board

1 x 8 input / 8 output expander board Ref.5201

1 x built-in 8 floors license stored in local SD card Ref.5221

1 x PSU 5.4A

1 x DIN Rail metal case. (It can allocate additional 2 x Ref.5201 8 I/O)



ref.5222

5201 EXPANDER 8 INPUTS / 8 OUTPUTS (EXP8-IO)

Board that provides **8 additional relays**, to activate 8 additional floors. The LIFT CONTROL KIT already includes 1 board so can manage 8 floors. Up to 7 additional 8 I/O expanders can be connected and powered from LIFT CONTROL KIT. **Total number of relays in a single LIFT CONTROL KIT will be 64.**



ref.5201

5221 LIFT CONTROL 8 FLOOR LICENSE EXTENSION

Digital file to UPGRADE the Lift Control Kit with 8 additional floors. The LIFT CONTROL KIT already includes 1 license for 8 floors.

NOTE: When ordering 2 or more 8 Floor Licenses extensions for a LIFT CONTROL KIT, 1 single file containing all the floors will be received.

Ref.5222 MAC address to be provided when ordering.



ref.5209

5209 LIFT CONTROL METAL ENCLOSURE

Metal case to allocate additional Ref.5201 8 I/O expanders.

Total amount of expanders that can be allocated in this box is 4 (additional 32 relays/floors)



www.fermax.com

